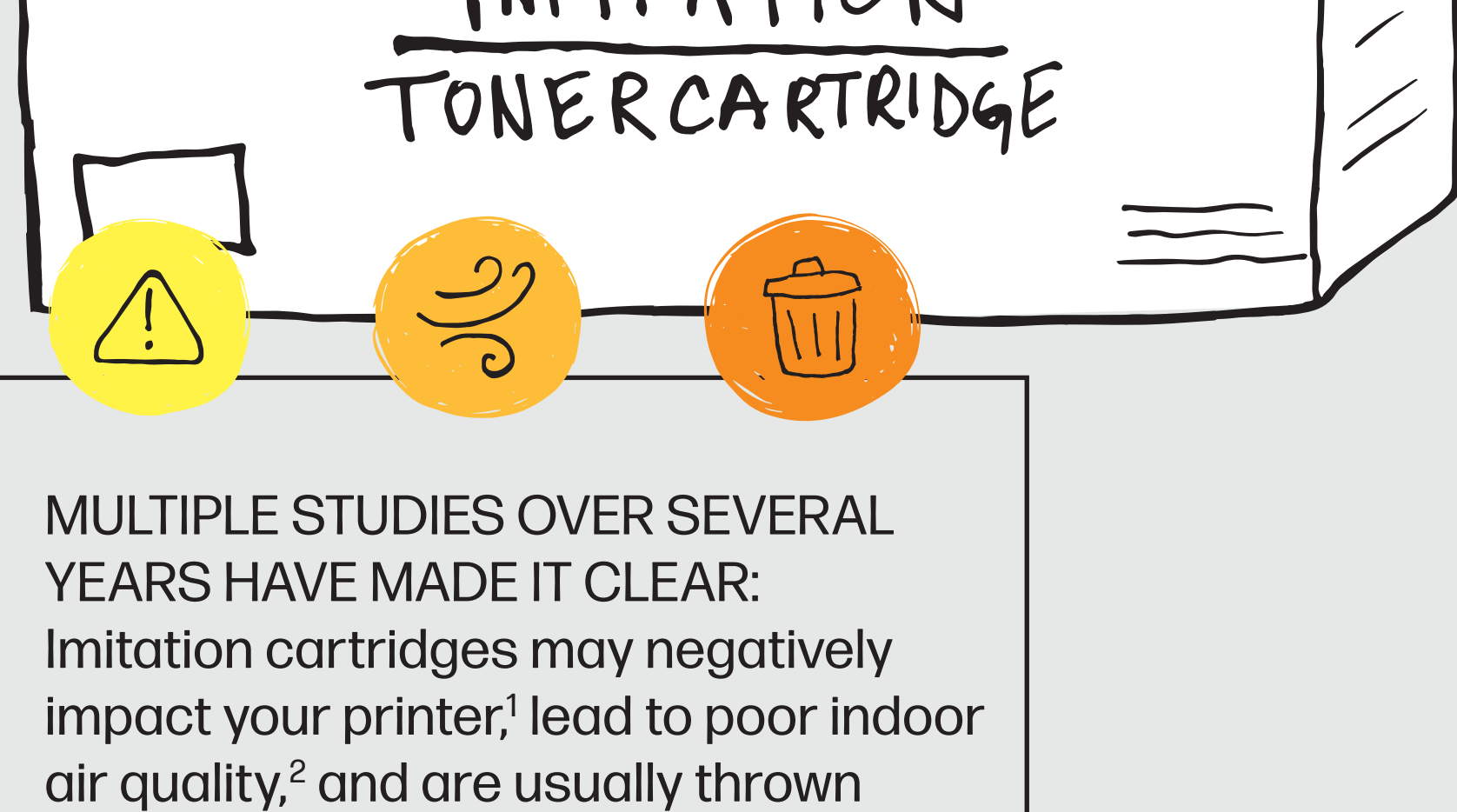


Are imitation cartridges worth the gamble?

Off-brand toner cartridges may look similar or claim to be “compatible,” but testing reveals they are poor replacements for Original HP.



MULTIPLE STUDIES OVER SEVERAL YEARS HAVE MADE IT CLEAR:

Imitation cartridges may negatively impact your printer,¹ lead to poor indoor air quality,² and are usually thrown away instead of being recycled.³

HOW DO IMITATIONS AFFECT MY PRINTER?

Almost
1/2

of pages have
print-quality issues⁴

They may cause your
printer to require more
service¹

nearly

50%

of tested cartridges
have performance
issues or fail
prematurely⁴



Can shorten
the life of
your printer!

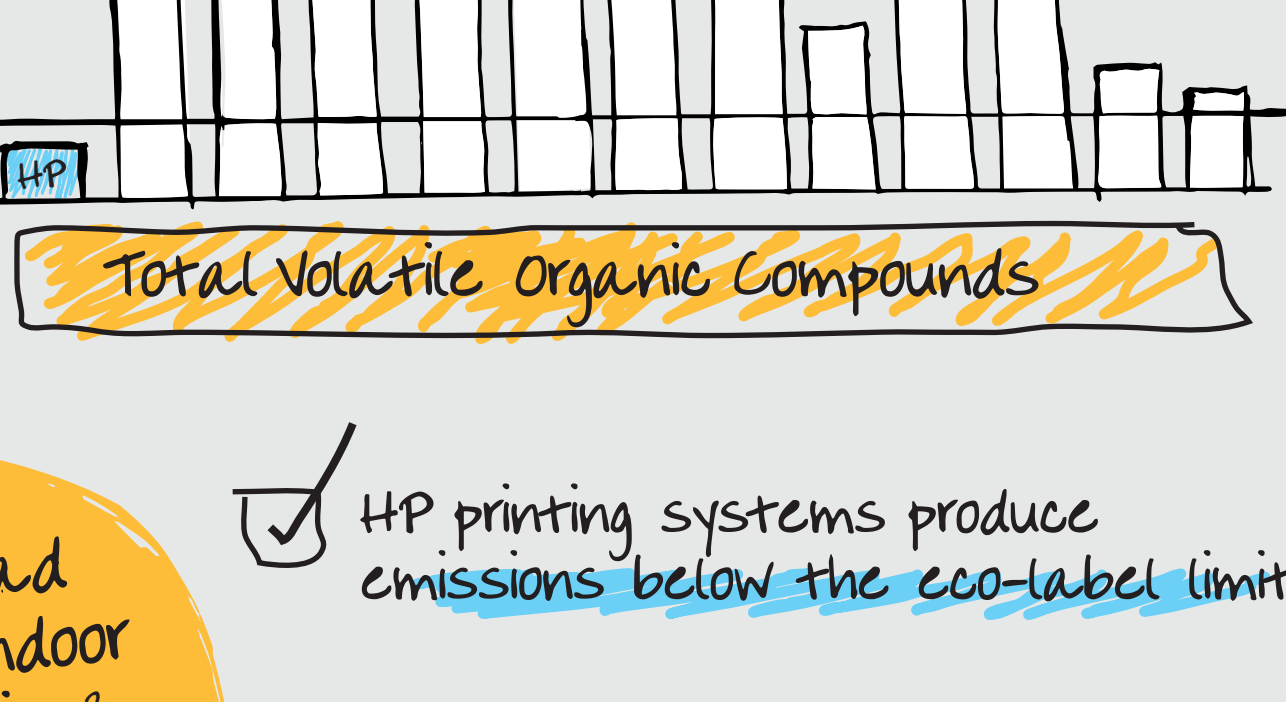
HOW DO IMITATIONS IMPACT INDOOR AIR QUALITY?

100%

of tested imitation toner
cartridges fail eco-label
emissions criteria²

407% over the
limit

May be
harmful to
your health!⁵



May lead
to poor indoor
air quality²

✓ HP printing systems produce
emissions below the eco-label limit

HOW DO IMITATIONS IMPACT THE ENVIRONMENT?

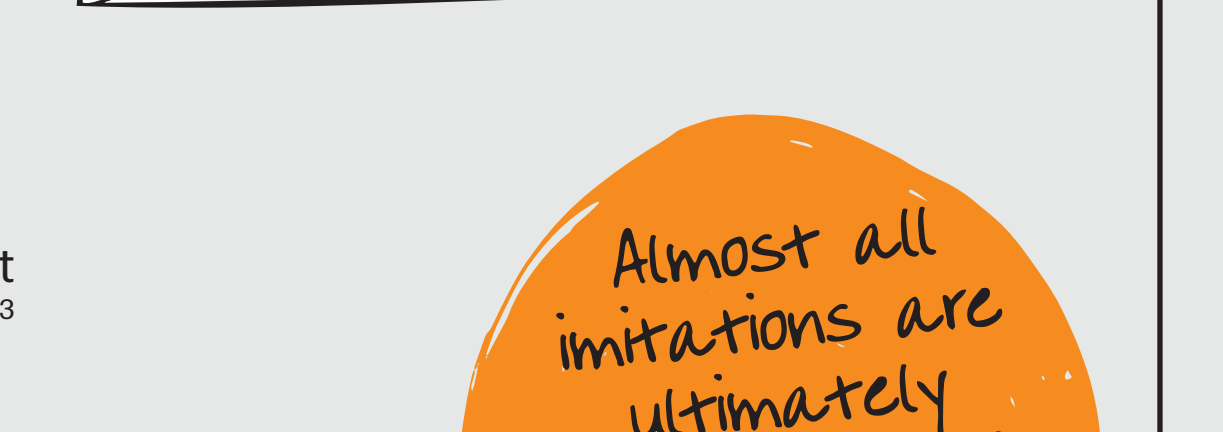
30%

larger carbon footprint
than Original HP Toner
Cartridges⁶

23%

higher energy use
than Original HP
Toner Cartridges⁶

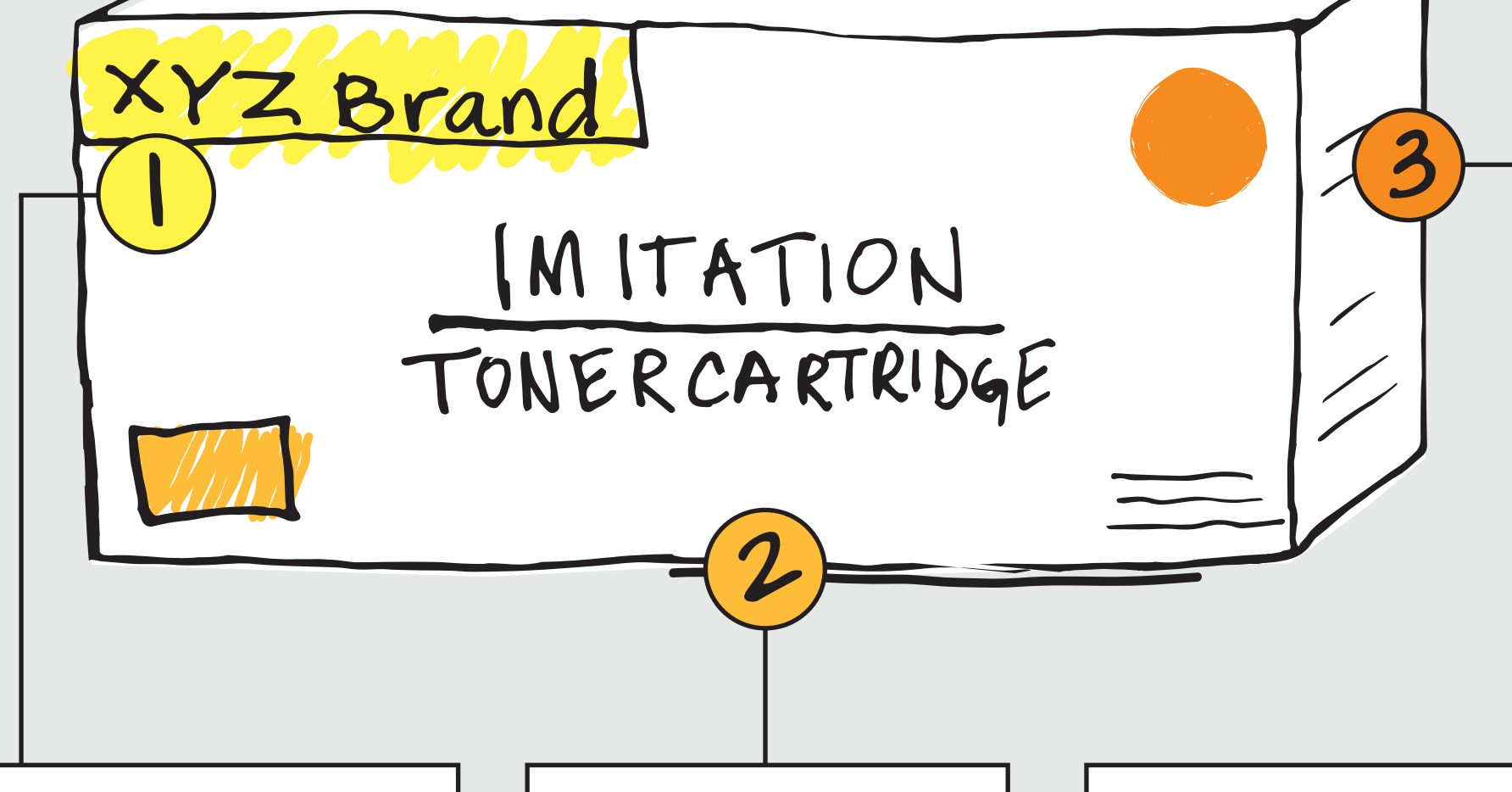
Imitation cartridge
manufacturers rarely collect
and recycle their cartridges³



Almost all
imitations are
ultimately
thrown away³



How do I spot an imitation cartridge?



CHECK THE DESCRIPTION

You may find words
such as “premium,”
“generic,” or “new
build” on the
packaging or in the
product description



CHECK THE PRICE

Due to the use of
cheap components
and inferior
manufacturing
practices,
imitations may cost
significantly less
than Original HP



CHECK THE PACKAGE

Often does not
include the HP
logo and country
of origin is usually
China or is not listed

Only Original HP Toner Cartridges hit the spot.

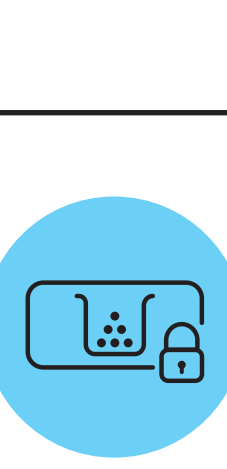


Original HP Toner Cartridges are designed to work with your printer

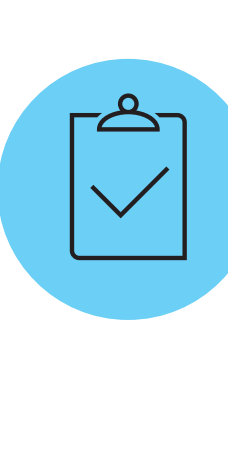
the first time, every time



Reliability and
outstanding print
quality mean
fewer reprints and
less waste⁴



Designed for
security with
tamper-resistant
chips, firmware,
and packaging to
help protect your
printer⁷



Printing systems⁸
will perform
within EPEAT
emission
guidelines²



Through the
HP Planet Partners
program,⁹ no
returned cartridges
end up in a landfill



1. May 2021. EPEAT survey commissioned by HP. Results based on 201 surveys from HP ServiceOne Printer Technicians who have at least 6 months of experience servicing HP LaserJet printers with HP Original cartridges and non-HP toner cartridges installed in the past 12 months, who recommended cartridges. Survey was conducted in the United States. For details, see <https://www.hp.com/go/epaat>.
2. 2022 WRI Emissions Supply Chain Recycling study by Report Intelligence, commissioned by HP, based on average results of interviews with 10 manufacturers and HBC members in North America. See <https://www.hp.com/go/2022reportintelligence>.
3. 2022 WRI Emissions Supply Chain Recycling study by Report Intelligence, commissioned by HP, based on average results of interviews with 10 manufacturers and HBC members in North America. See <https://www.hp.com/go/2022reportintelligence>.
4. Jan 2022. EPEAT. All Quality and Reliability study, commissioned by HP, compared Original HP LaserJet Toner Cartridges with four brands of imitation cartridges for HP LaserJet Pro M406n (USA) and HP LaserJet Pro P1106n (USA) sold in United States and Canada. See <https://www.epeat.org/en/compare/HP%20LaserJet%20Pro%20P1106n%20USA>.
5. 2022 WRI Emissions Supply Chain Recycling study by Report Intelligence, commissioned by HP, based on average results of interviews with 10 manufacturers and HBC members in North America. See <https://www.hp.com/go/2022reportintelligence>.
6. 2022 WRI Emissions Supply Chain Recycling study by Report Intelligence, commissioned by HP, based on average results of interviews with 10 manufacturers and HBC members in North America. See <https://www.hp.com/go/2022reportintelligence>.
7. HP office-class printing systems are select Enterprise and Managed devices with FutureSmart firmware 4.5 and up, Pro devices, LaserJet models 300 and up, with respective Original HP Toner, PageWide and Ink Cartridges. Does not include HP integrated print-on-demand cartridges. Digital supply chain tracking, hardware and packaging security features vary by model. See <https://www.hp.com/go/secureprint>.
8. All HP printing systems consist of HP printer, HP paper and Original HP supply. Blue Angel DE-UZ 219 emissions criteria are under review and will be available when printing system launched.
9. Program availability varies. For more information, visit <https://www.hp.com/go/planetpartners>.