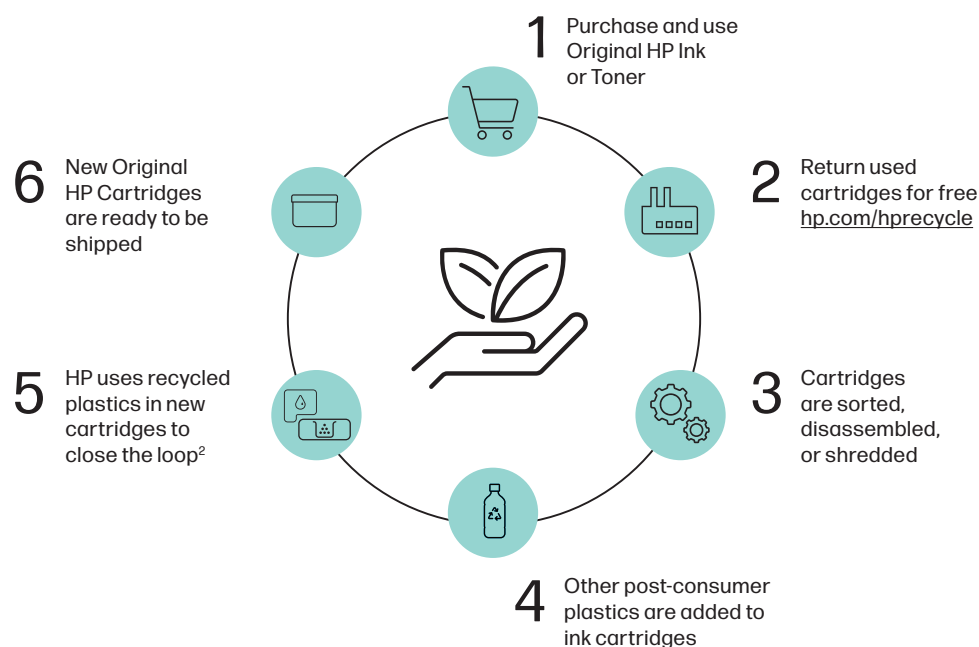


HP closed-loop recycling



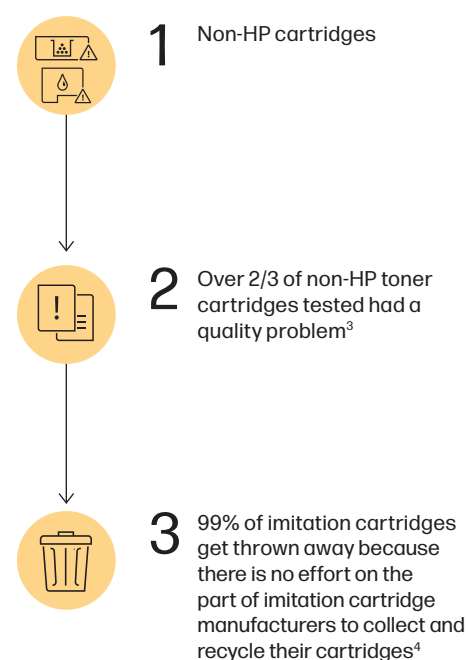
When you choose Original HP Cartridges and recycle through HP Planet Partners, you become part of a more circular, sustainable system—where materials are added and reused to make new products, and no cartridges end up in a landfill.¹

CIRCULAR ECONOMY



VS

LINEAR ECONOMY



BRINGING USED PRODUCTS BACK TO LIFE

In HP's closed-loop process, almost every part of the toner cartridge is either recycled or reused; nothing goes to a landfill. HP combines cartridges returned through HP Planet Partners with other plastics, such as reclaimed ocean-bound plastic bottles, to make new Original HP Print Cartridges and other everyday products. Program availability varies. See hp.com/hprecycle.

END UP IN A LANDFILL

Nearly 90% of remanufactured cartridges sold will ultimately end up in a landfill because remanufacturers prefer to work with cartridges that have never been remanufactured before.⁴

5.4 BILLION | Original HP Cartridges

HAVE BEEN MANUFACTURED USING RECYCLED PLASTIC⁵



85% of Original HP Ink Cartridges contain recycled content²

100% of Original HP Toner Cartridges contain recycled content²

HP has kept out of landfills a cumulative 134,000 tonnes of recycled plastic from recycled Original HP Cartridges and post-consumer plastic products. Instead, these materials were upcycled for continued use.⁵



962 MILLION
ink and toner cartridges
recycled by customers
through HP Planet Partners⁵



143 MILLION
recycled plastic hangers⁵



5.5 BILLION
recycled plastic bottles⁵

REDEFINING IMPACT AND CHANGING LIVES

HP uses recycled plastic bottles collected in Haiti and from other sources in the manufacturing of Original HP Ink Cartridges. This effort helps to create sustainable jobs, brings opportunity to the people in Haiti, and helps prevent plastics from reaching the Caribbean Sea. Since 2016, HP has used more than 65 million plastic bottles through our Haiti partnership to be upcycled into Original HP Ink Cartridges and hardware products. For more information on HP closed-loop recycling and our efforts in Haiti, see hp.com/go/Rosette.



1. Program availability varies. For more information, visit hp.com/recycle.

2. 100% of Original HP Toner Cartridges contain between 1-79% post-consumer or post-industrial recycled content. See hp.com/TonerRecycledContent for list. More than 85% of Original HP Ink Cartridges contain between 4-75% post-consumer or post-industrial recycled content. See hp.com/InkRecycledContent for list.

3. Jan 2022 SpencerLab Quality and Reliability study, commissioned by HP, compared Original HP LaserJet Toner Cartridges with 10 brands of non-HP toner cartridges for HP LaserJet Pro M402dne (26A/X) and Pro P1102w (85A) sold in United States and Canada. See www.spencerlab.com/reports/HPReliability-NA-nonHP-2022.pdf.

4. 2022 North America Supplies Recycling study by Keypoint Intelligence, commissioned by HP, based on average results of interviews with 15 remanufacturers and NBC resellers in North America. See hp.com/go/NA-2022KeypointIntelligence.

5. See <https://www8.hp.com/h20195/v2/GetPDF.aspx/c08228880.pdf>.

